

STUDIO DI FATTIBILITA' TECNICO ECONOMICA

Stato del materiale accumulato nell'apposito vallo contenitivo, verifica dei dreni superficiali e valutazione di un alleggerimento del variante con disaggio del materiale e profilatura.

PROGETTISTA

Ing. Giovanni Bor

CONSULENZA GEOLOGICA

Geol. Luca Maffeo Alberte



10 - SEZIONI DI RAFFRONTO (13-26)

Aprille 2026

CONSULENZA GEOLOGICA

LAND & COGECO

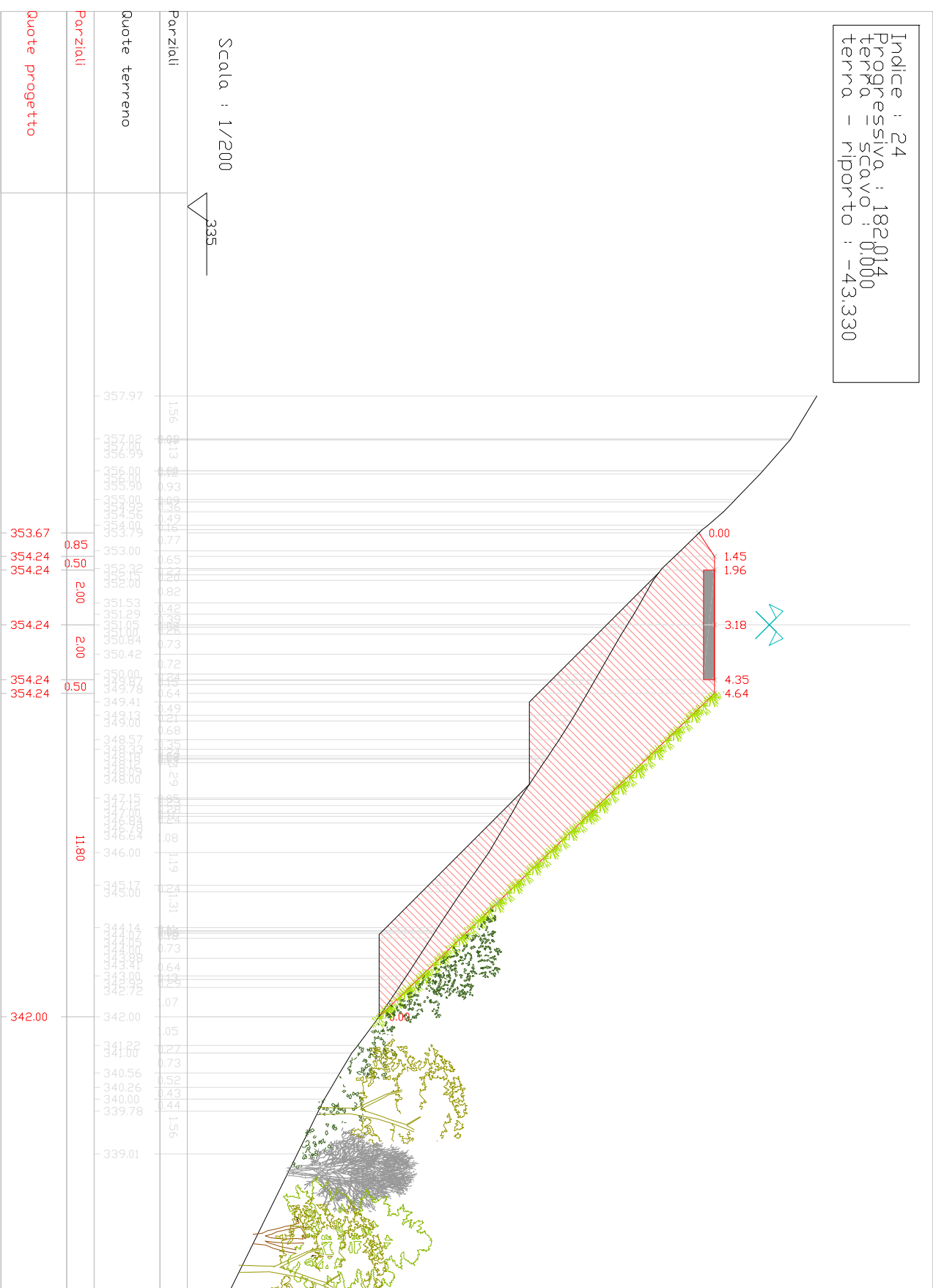
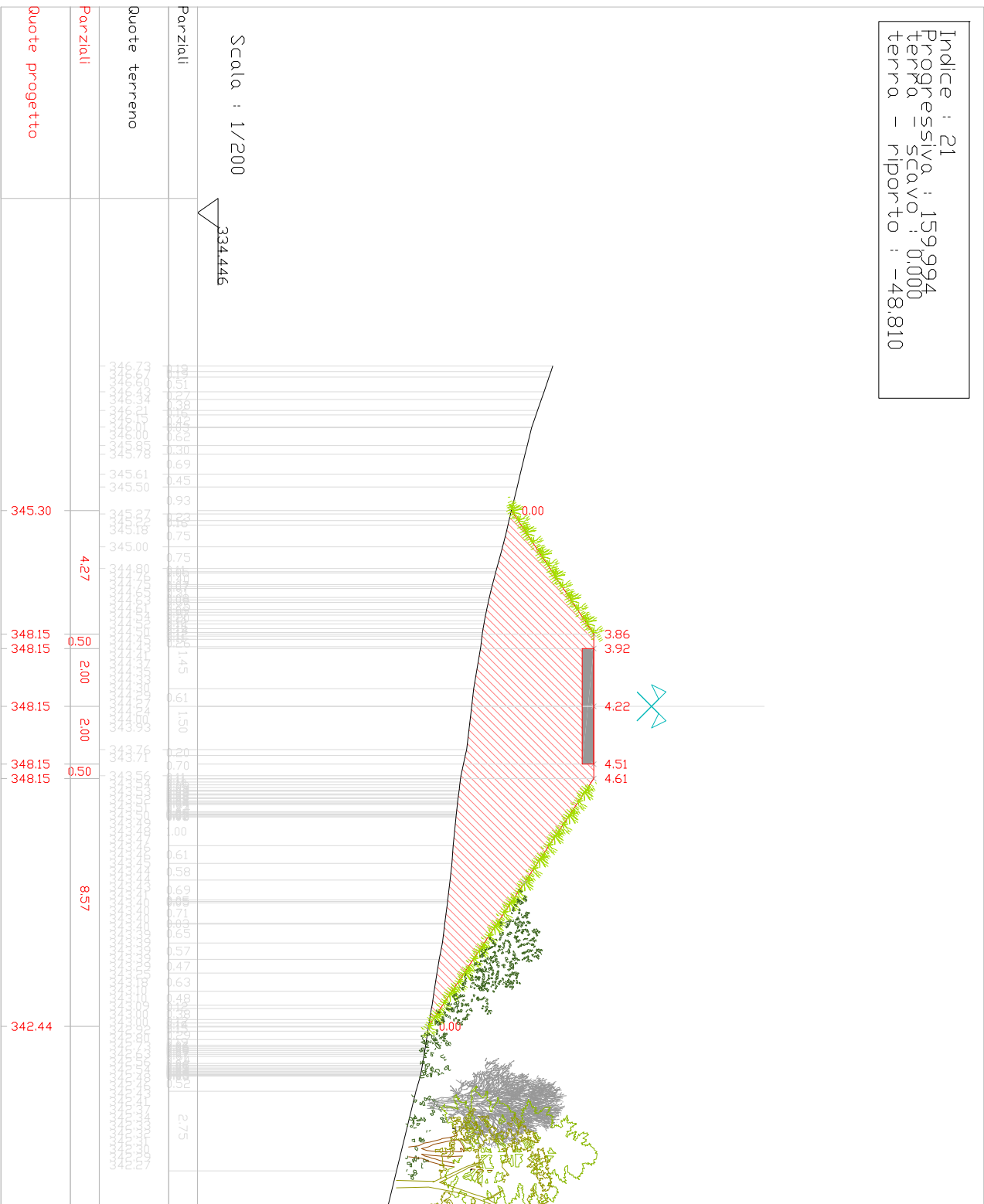
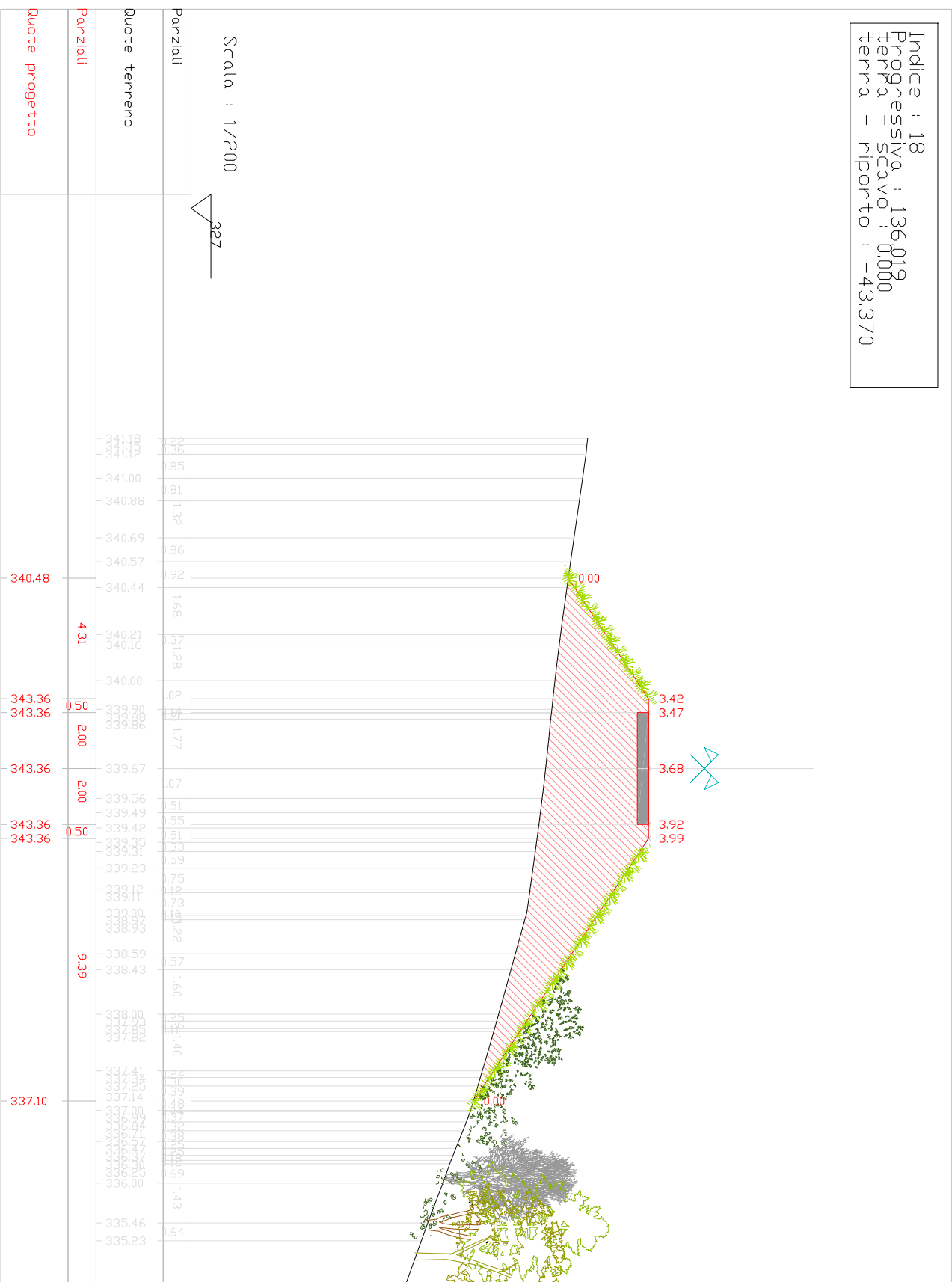
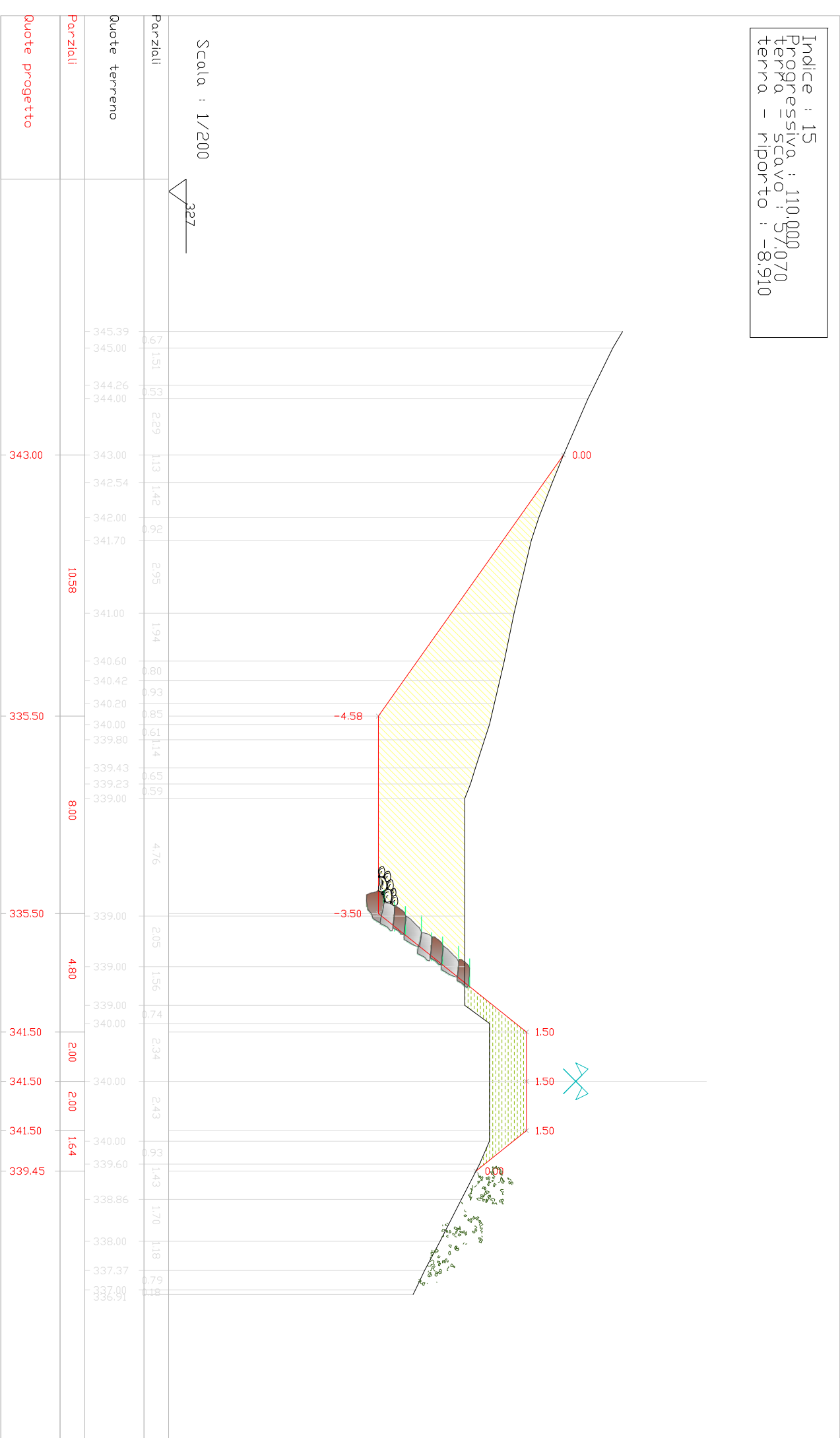
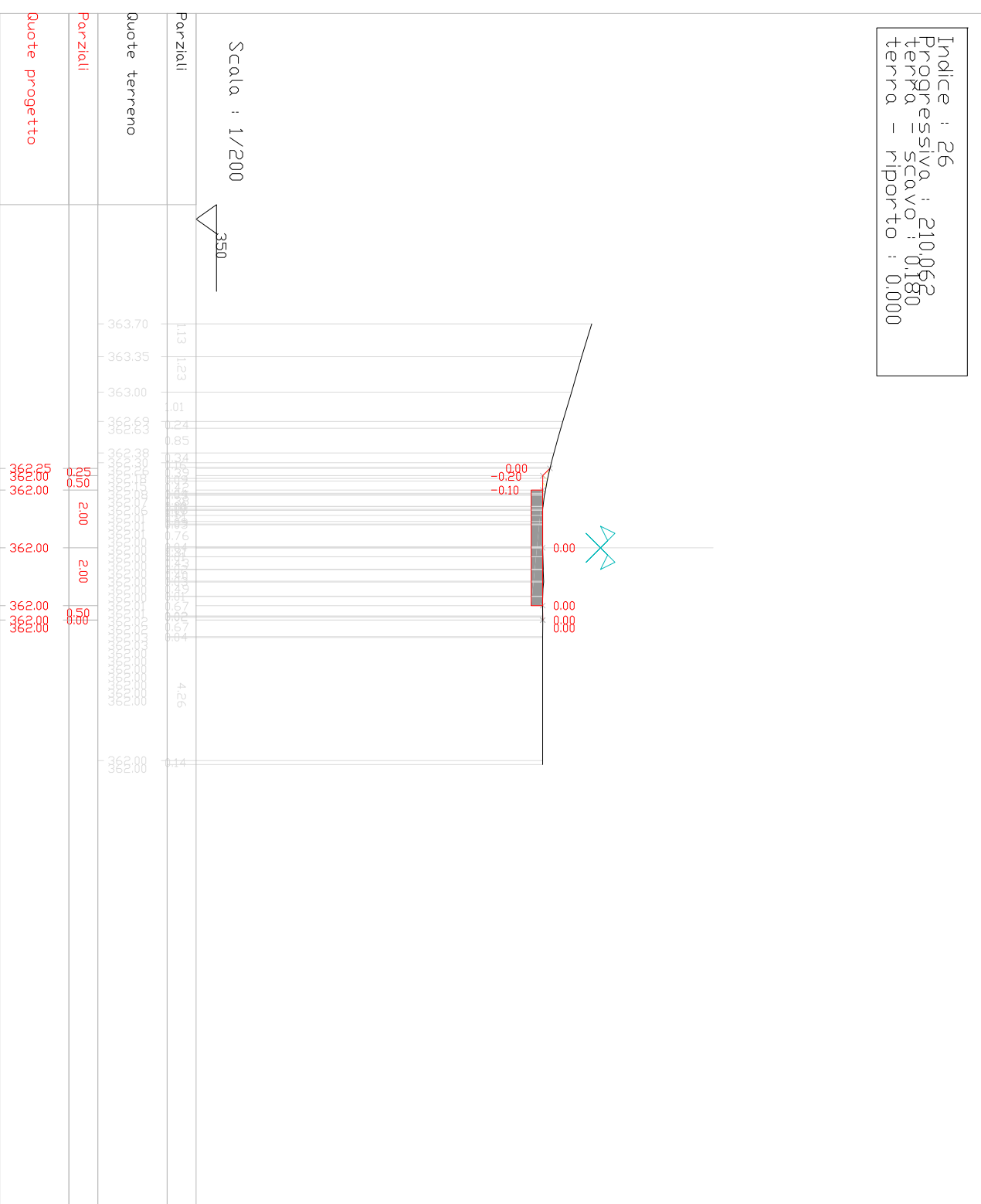
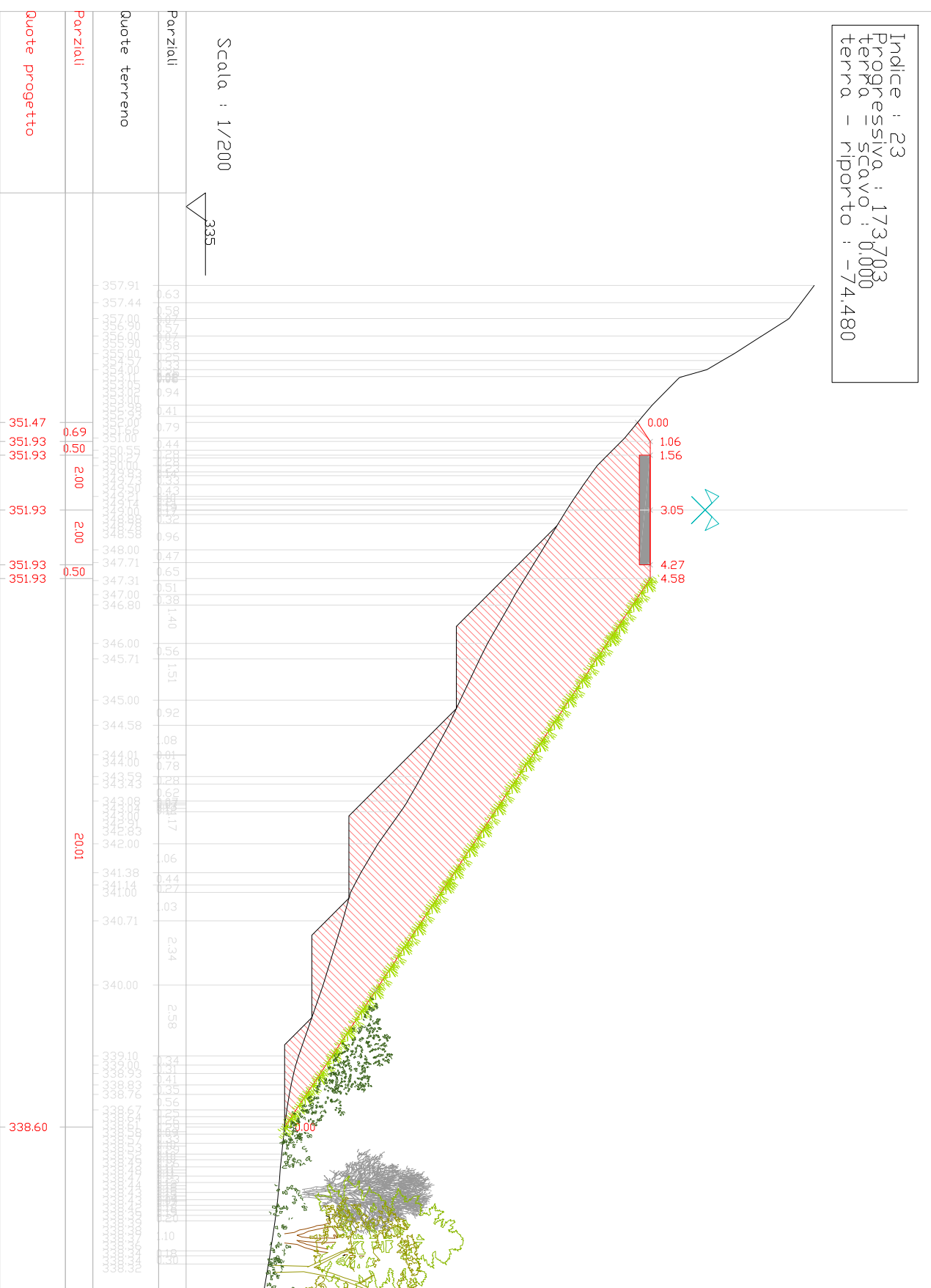
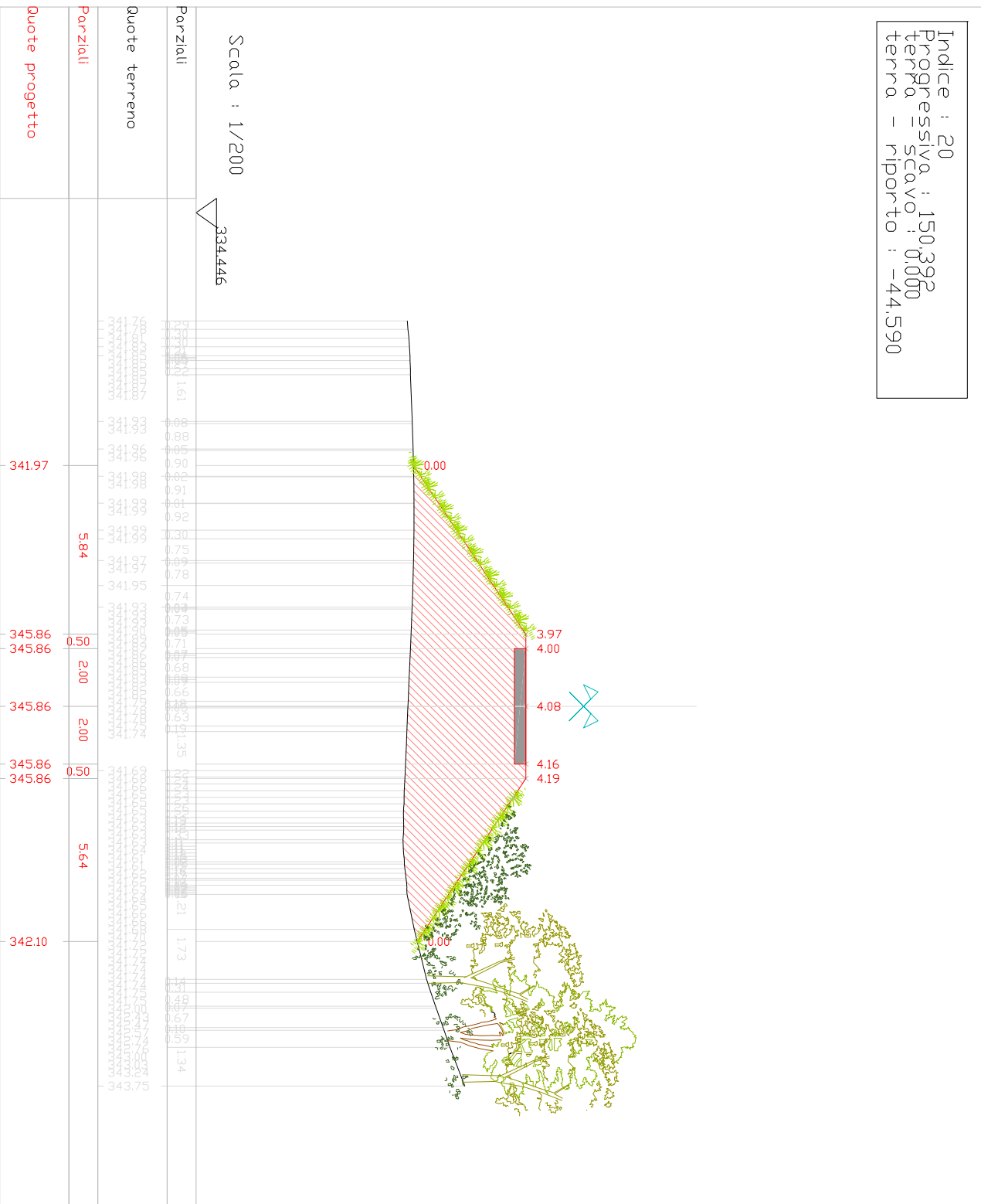
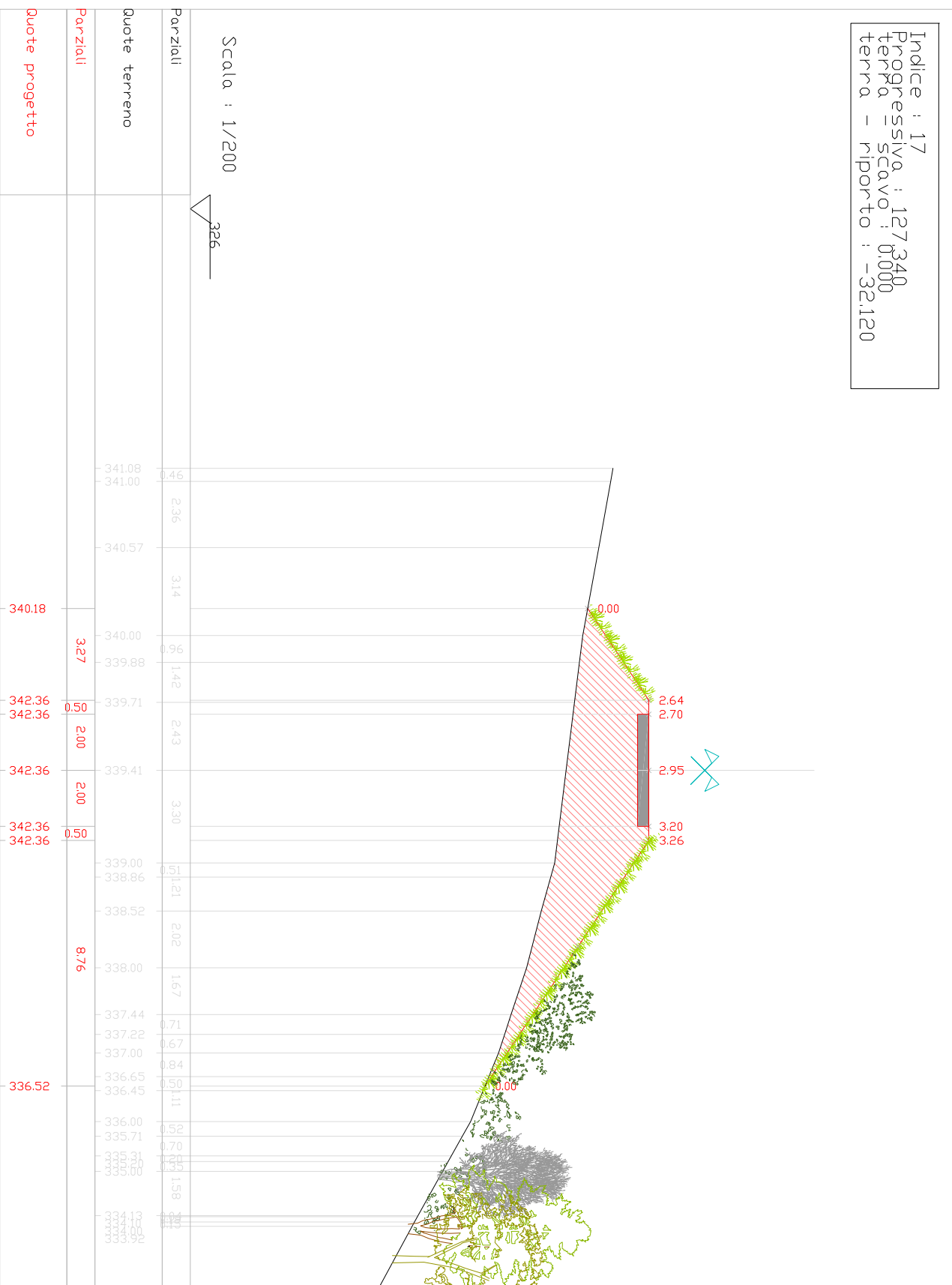
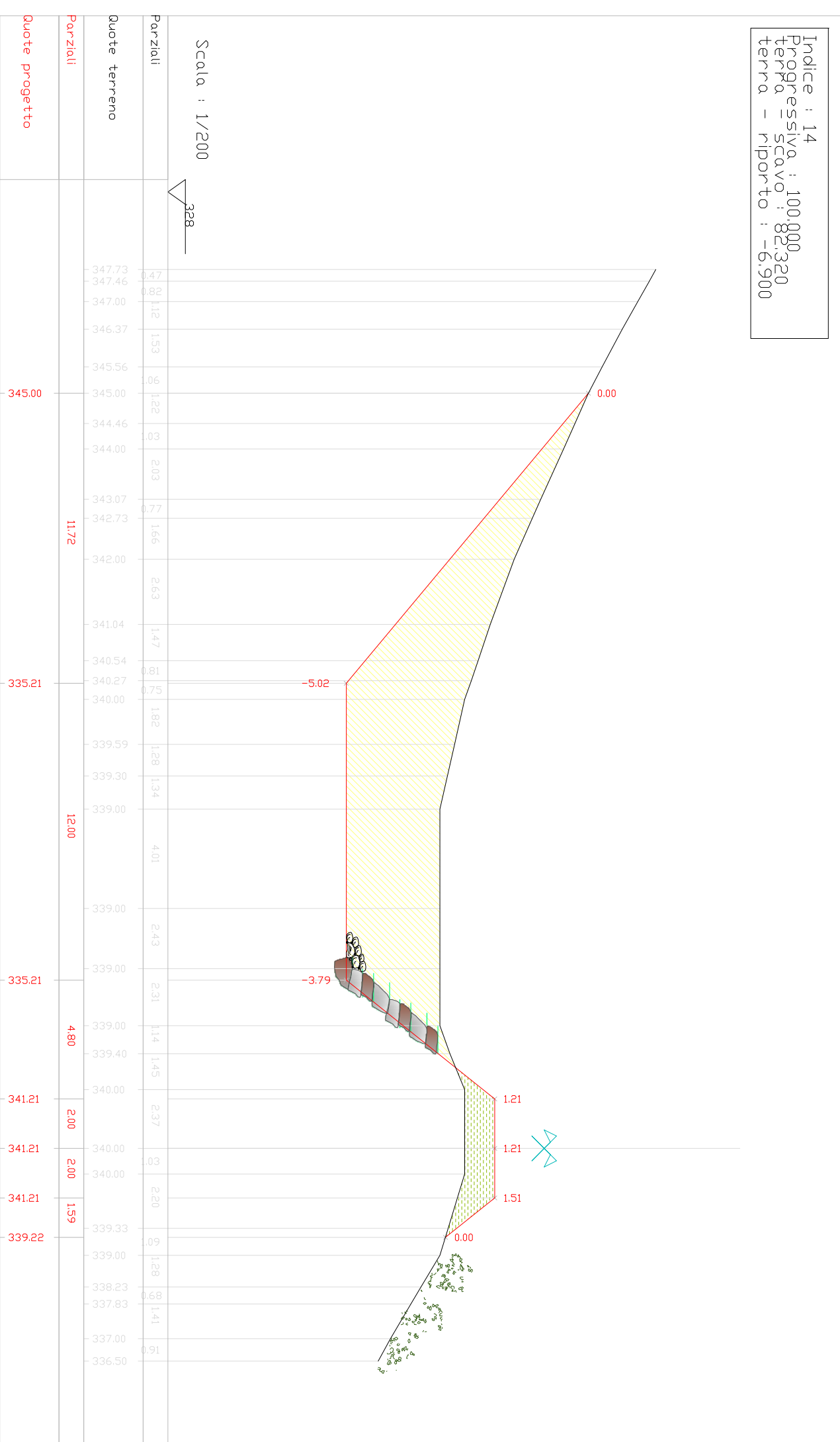
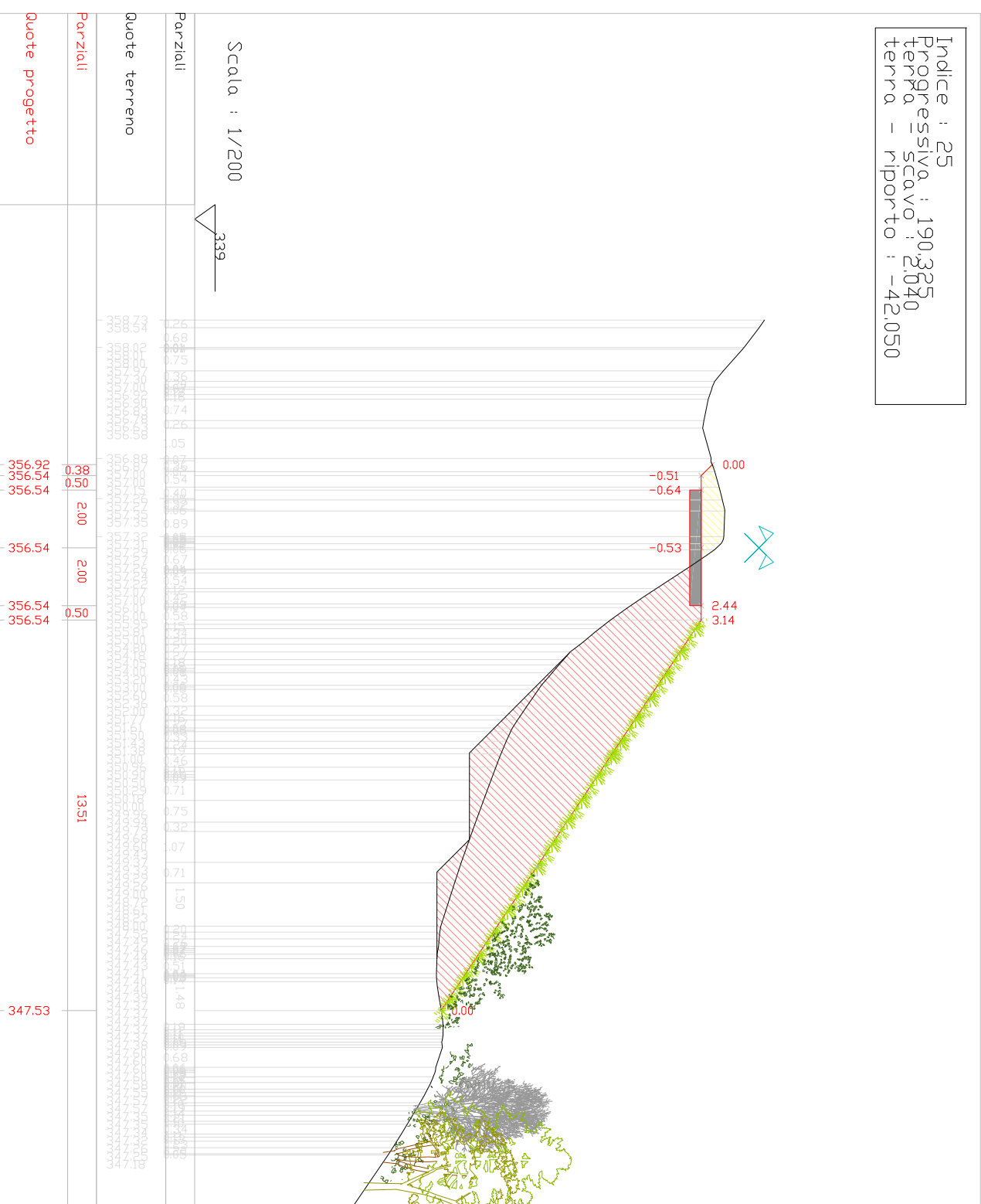
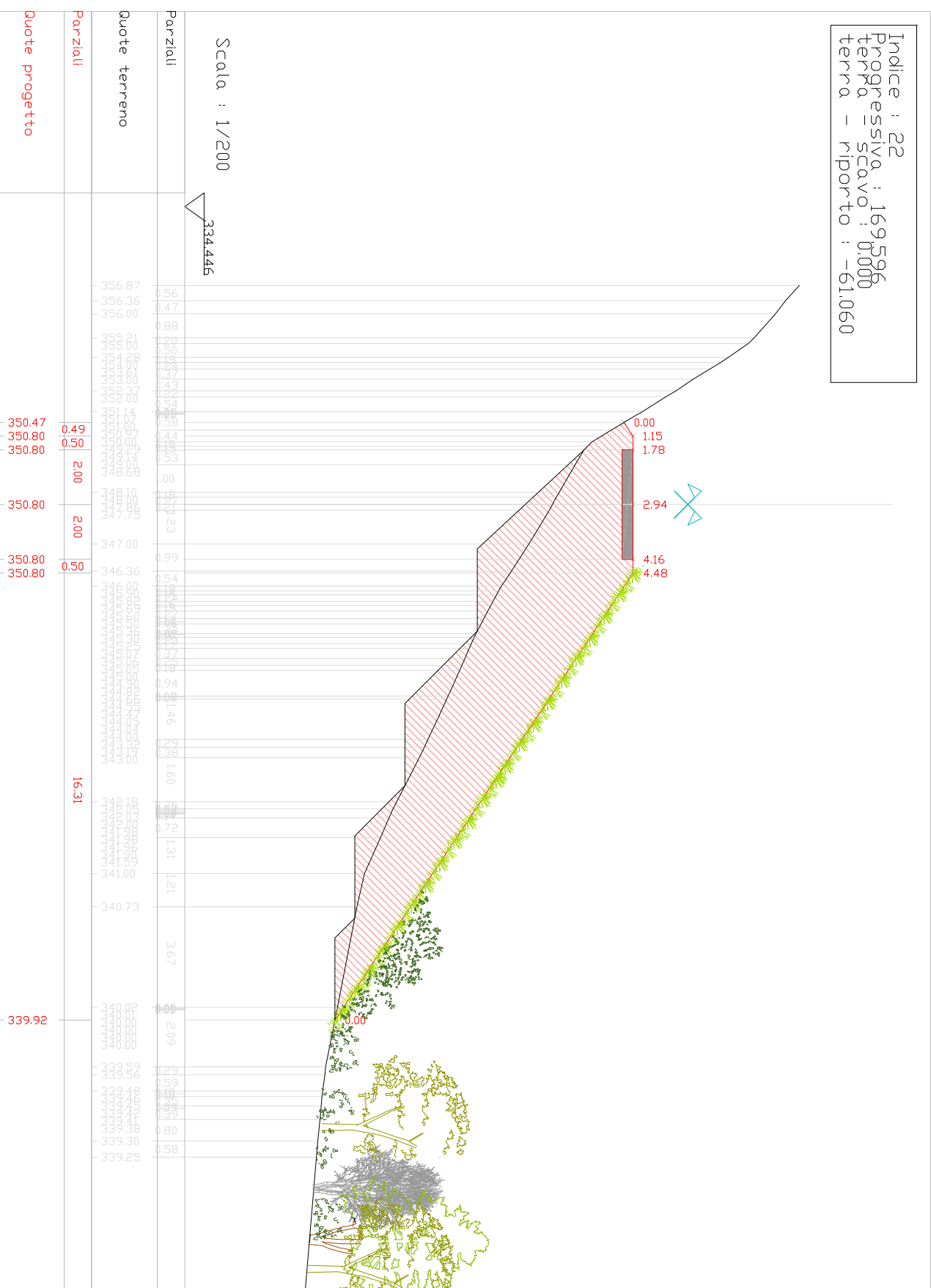
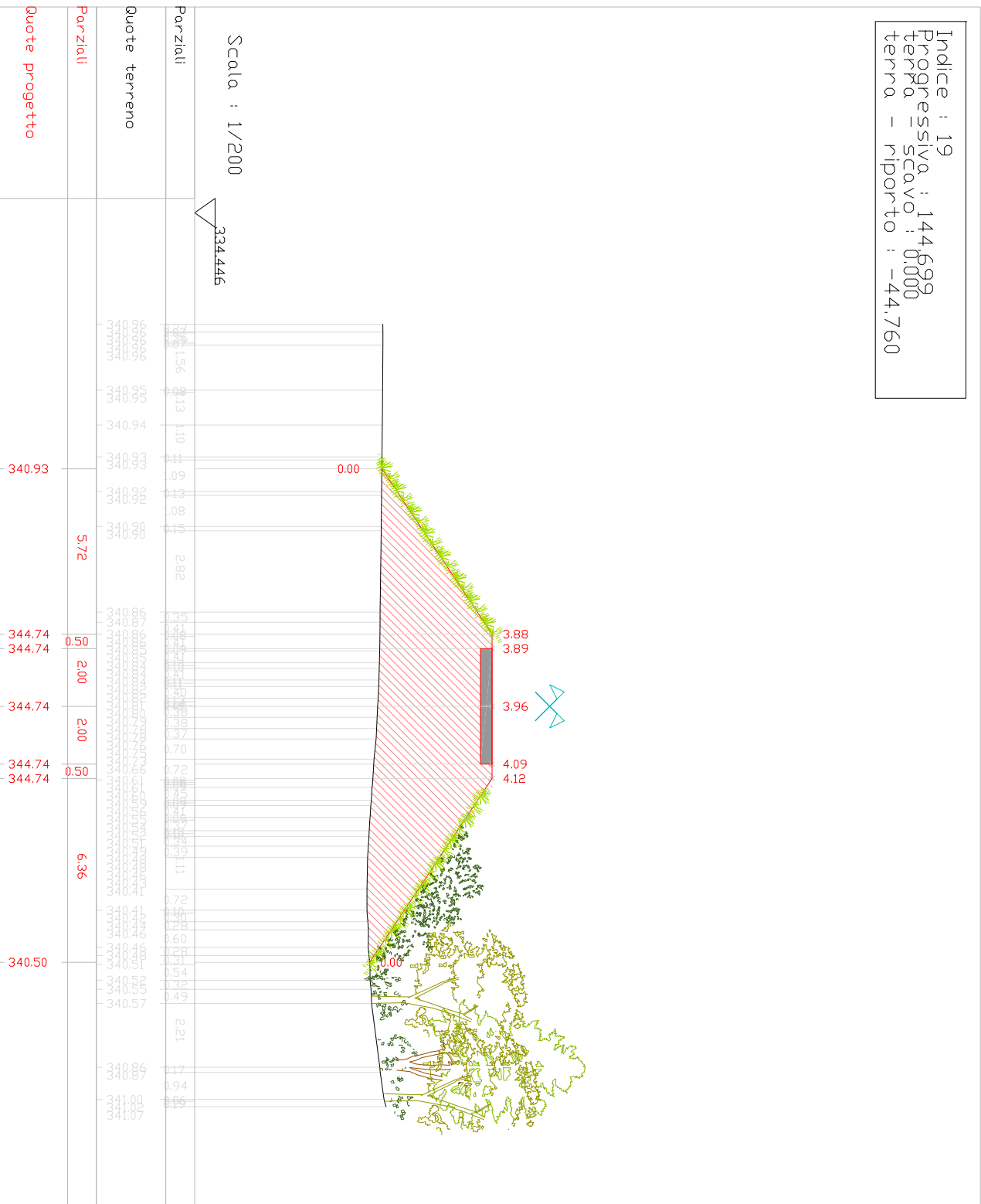
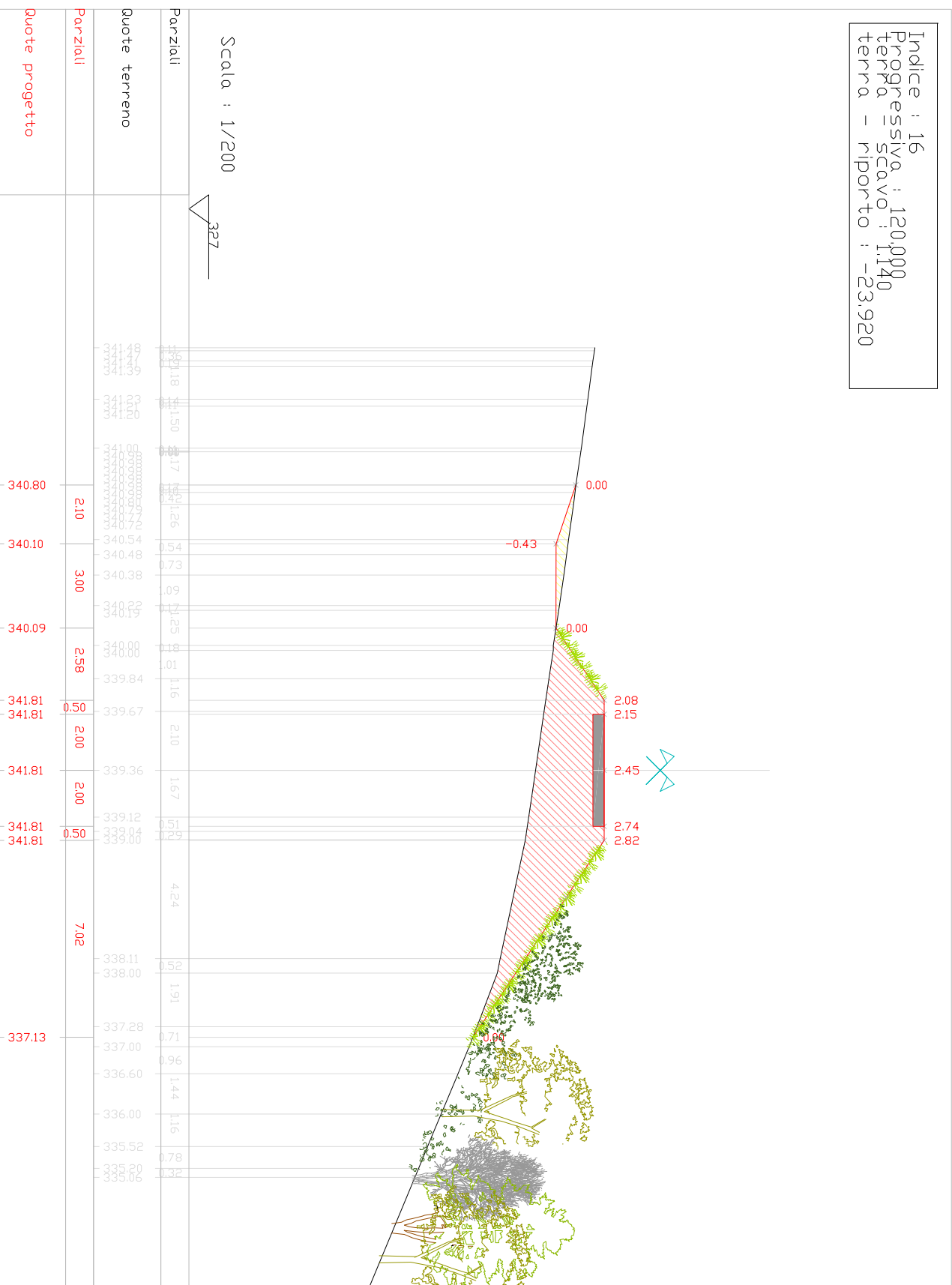
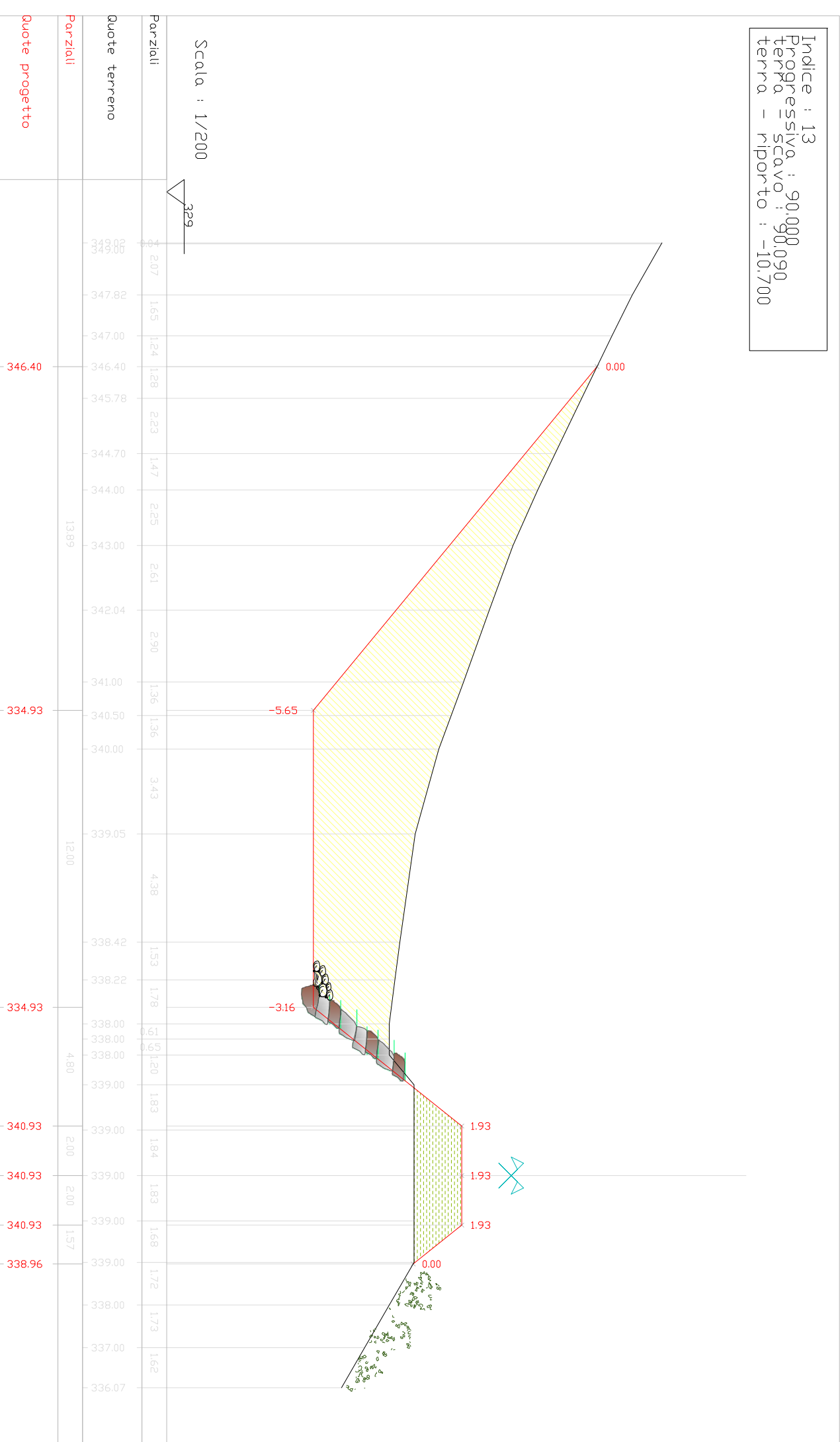
Rogno (BG)
SEDELEGALE Via Manifattura 29/GTel. 0354340011 fax. 0354340011
 011 234000000

allrightsreserved - www.ojs.umsida.ac.id

BenGenering
Studio Tecnico Associato



Via Gera, 29 25050 - Niarde (BS)
P.IVA e C.F. 037804808988
Tel. 3519299802
E-mail: info@bengenering.eu
www.bengenering.eu



Totale del volume 'movimento terra
* Totale in scavo = 4599,81s
* Totale in riporto = 4754,62r
* Totale di compenso = 154,81r